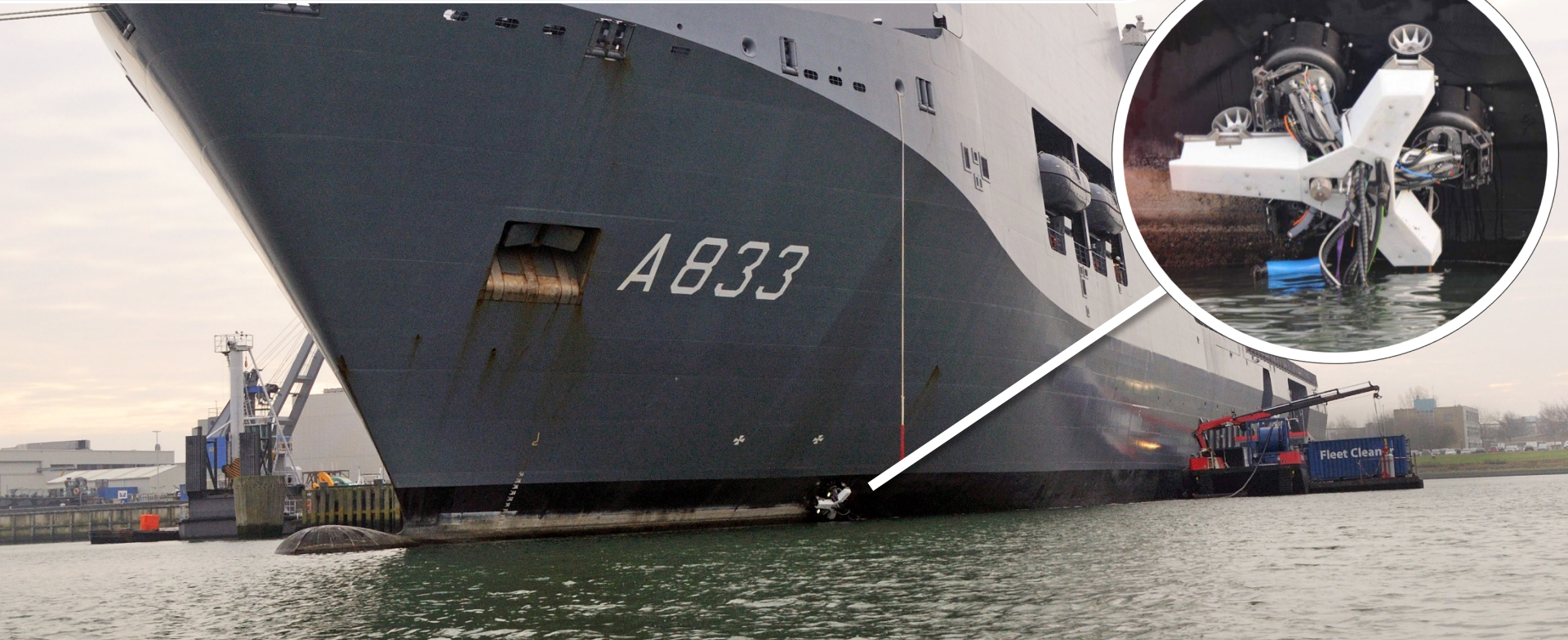


Fleet Cleaner

Fouling on ships increases fuel consumption with on average 5%



Fleet Cleaner reduces impact of fouling to almost zero by cleaning ships in port



Current practice



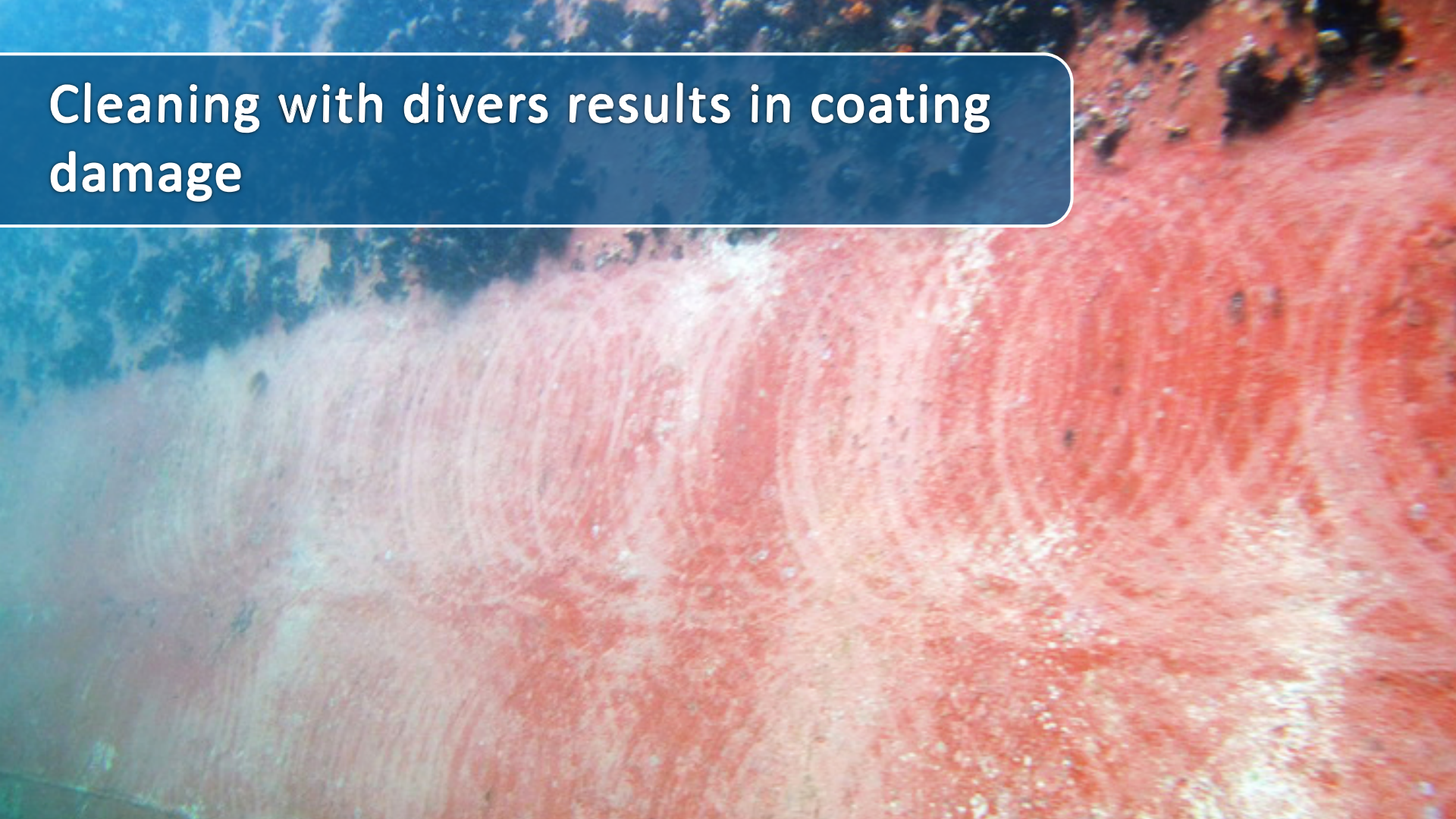
Cleaning outside ports
Only under water cleaning
Ship coating damaged
Fouling released in water


Fleet Cleaner solution



Cleaning during port time
Under and above water cleaning
Cleaning impact control
Fouling captured

Cleaning with divers results in coating damage



An aerial photograph of a coastal area. The top portion of the image shows a dark, rocky shoreline with some sparse vegetation. Below this is a wide, bright red sandy beach. The bottom portion of the image shows the blue ocean with some white surf visible near the shore. The overall scene is a natural coastal landscape.

<https://youtu.be/MFmKh847jZk>

Cleaning head



Curvatures



Control room

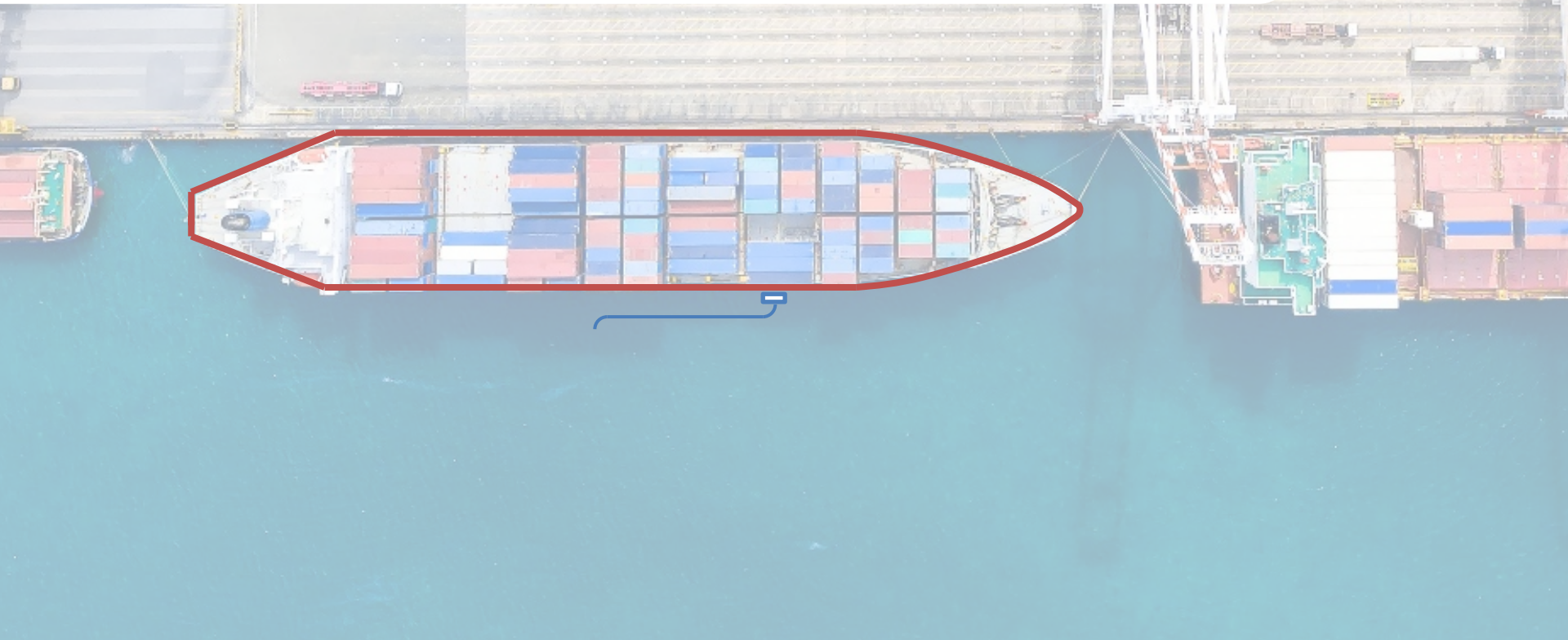


Support vessel





The Fleet Cleaner is operated during loading and unloading from a support vessel



At Fleet Cleaner we aim to deliver the most complete cleaning service

